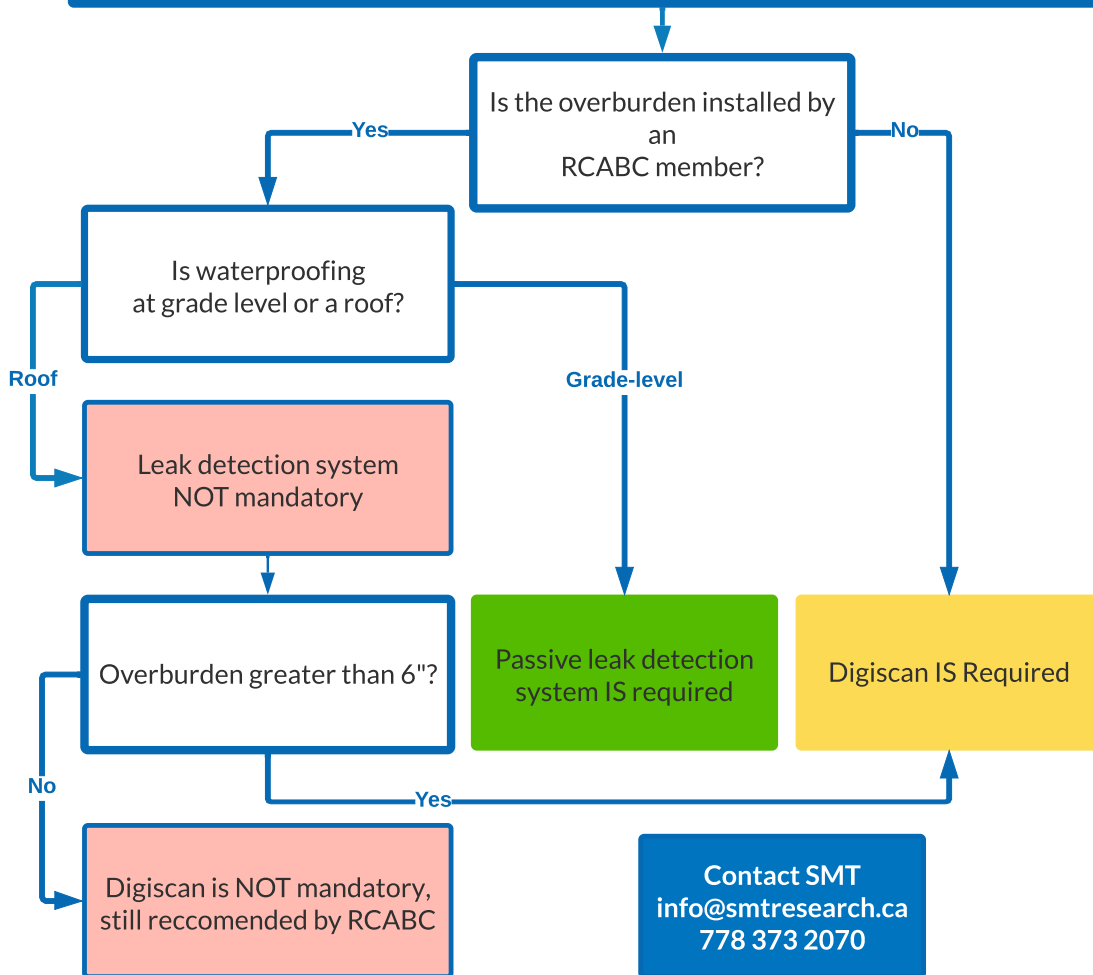


RCABC RoofStar Leak Detection Guide



What do I need to satisfy RCABC RoofStar Guarantee requirements for leak detection?

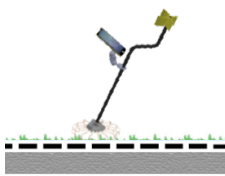
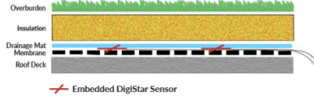
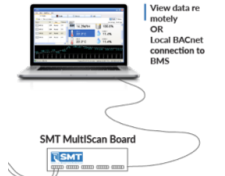


Frequently Asked Questions

Q1: What is the difference between a scan and a system?

A Digiscan is a *point in time* scan of the membrane to verify it is intact and free of leaks/deficiencies. A leak detection system involves leaving sensors in place for future testing, without the need for overburden removal. See Q2 for more details on the types of systems available, or contact SMT.

Q2: What are the main types of leak detection systems available?

<h4>Digiscan Service</h4> <p><i>Point in time integrity scan</i> to check if the membrane has leaks & deficiencies prior to covering with overburden. No system left in place.</p> 	<h4>Passive Leak Detection</h4> <p>System sensors installed and left in place, but not monitored. Enables <i>future inspection</i> of the membrane for leaks & deficiencies without removing the overburden.</p> 	<h4>Active Leak Detection</h4> <p>System sensors installed and <i>actively monitored</i> with building electronics in real time for leaks in an inverted system or moisture in conventional roofing system.</p> 
--	--	---

Q3: What roof types are suitable for leak detection?

Low slope flat roofs with non-conductive or semi-conductive membranes are suitable for leak detection. We can instrument both inverted and conventional roofs. Contact SMT to check if your waterproof membrane is suitable.

Q4: Does RCABC recommend the use flood testing?

No. Flood testing (as an alternative to an integrity scan) is not recommended by RCABC.



MEMBER

NOTES:
References from RCABC:
'The RoofStar Guarantee Program' Section 4, subsection 6 & 7 & Document: Fig1.1
Rev 2